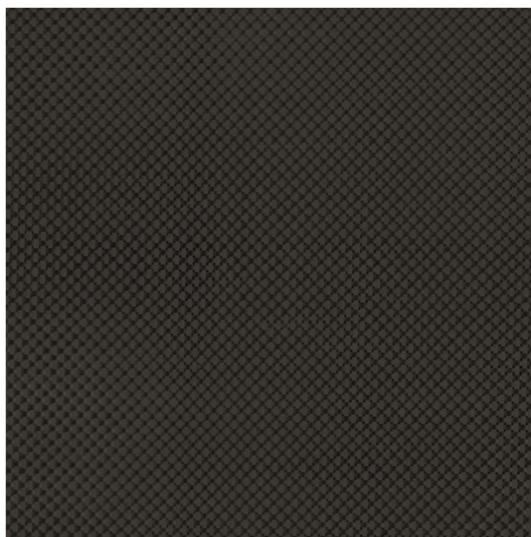


TORAYCA™ FABRICS DATA SHEET

Type		CO6142			
Carbon Fiber	warp	T300-1000-50A	Others	Glass fiber(Leno yarn)	
	weft	T300-1000-50A			
		unit	value	method	remark
Fiber areal weight		g/m ²	119	Equivalent to JIS R 7602	
Thickness Ref.		mm	0.15	Equivalent to JIS R 7602	

Fabric structure



package information

	unit	value	remark
width	cm	100	not include selvage
roll length	m	50, 110	
paper core inner diameter	mm	76	
roll weight	kg	15 (110m)	include papercore, rep. value
carton size	1130mm x220mm x 240mm(50m, 110m)		rep. value

Handling precautions for carbon fiber

- 1) Carbon fiber is conductive. Implement dust-proof measures to prevent electrical equipment from shorting, malfunctioning, etc., due to fibers scattering and flying around in the work area.
- 2) No cases of health problems due to carbon fiber have been reported, but short fibers may attach to the skin or viscous membrane to cause itchiness or inflammation. When handling carbon fiber, wear a mask, gloves and other protective equipment to prevent carbon fiber from being inhaled or attaching to the skin.
- 3) Incinerating waste material of carbon fiber or carbon fiber composite material may cause fibers to scatter and fly around and cause electrical failures. It is appropriate to bury such material as industrial waste.

Cautions

- 1) Prohibit the reproduction, replication of this data sheet without our permission.
- 2) The characteristic values shown in this data sheet are nominal values. It is not a guaranteed value.
- 3) This product documentation does not guarantee the result or product safety / compliance achieved by applying the information provided herein. When using the product, confirm its safety/compliance according to the purpose of use.
- 4) This data sheet may be subject to change without notice.
- 5) Our carbon fiber products or technologies relating to the design, manufacturing or use thereof may be classified as the goods specified in 1 to 15 of Appended Table 1 of the Export Trade Control Order, or as the technologies specified in 1 to 15 of Appended Table 1 of the Foreign Exchange Order, or as other goods / technologies that may be specified by the government as being subject to export control for national security reasons. When exporting or providing to a non-resident any such carbon fiber products or any such technology relating to the design, manufacture or use of carbon fiber products, an export permission or service transaction permission must be obtained from the Minister of Economy, Trade and Industry or other necessary procedure must be taken according to the Foreign Exchange and Foreign Trade Act or other relevant law, notice, etc..

Memo

TORAYCA™ is a trademark of Toray's high-performance carbon fiber.
TORAY Industries, Inc.

2-1-1, Nihonbashi Muromachi, Chuo-ku, Tokyo, 103-8666

TEL: +81-3-3245-5758